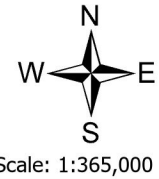
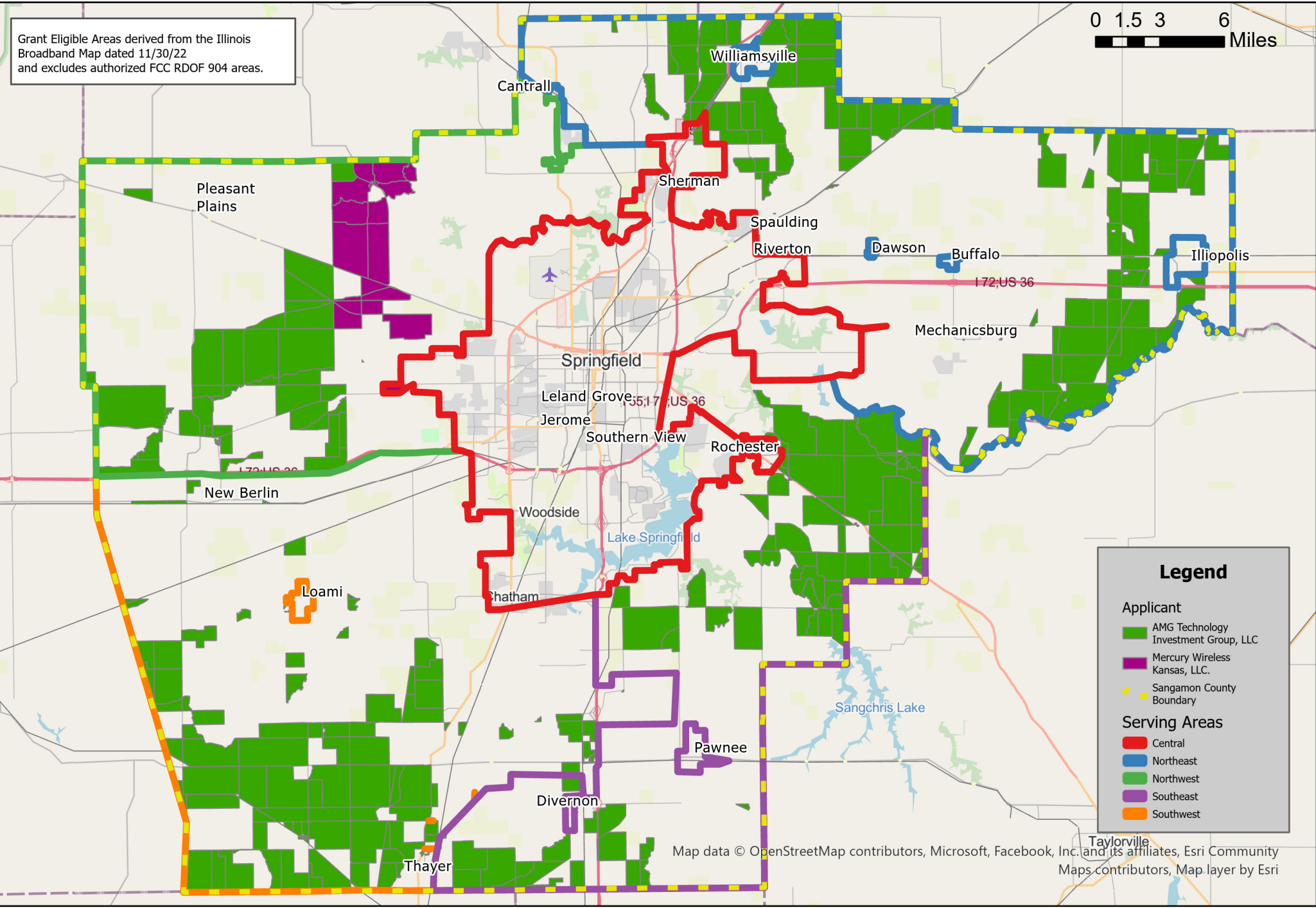


Sangamon County IL RDOF 904 Authorized Areas



Grant Eligible Areas derived from the Illinois Broadband Map dated 11/30/22 and excludes authorized FCC RDOF 904 areas.



Legend

Applicant

- AMG Technology Investment Group, LLC (Green)
- Mercury Wireless Kansas, LLC (Purple)
- Sangamon County Boundary (Yellow dashed line)

Serving Areas

- Central (Red outline)
- Northeast (Blue outline)
- Northwest (Light Green outline)
- Southeast (Purple outline)
- Southwest (Orange outline)